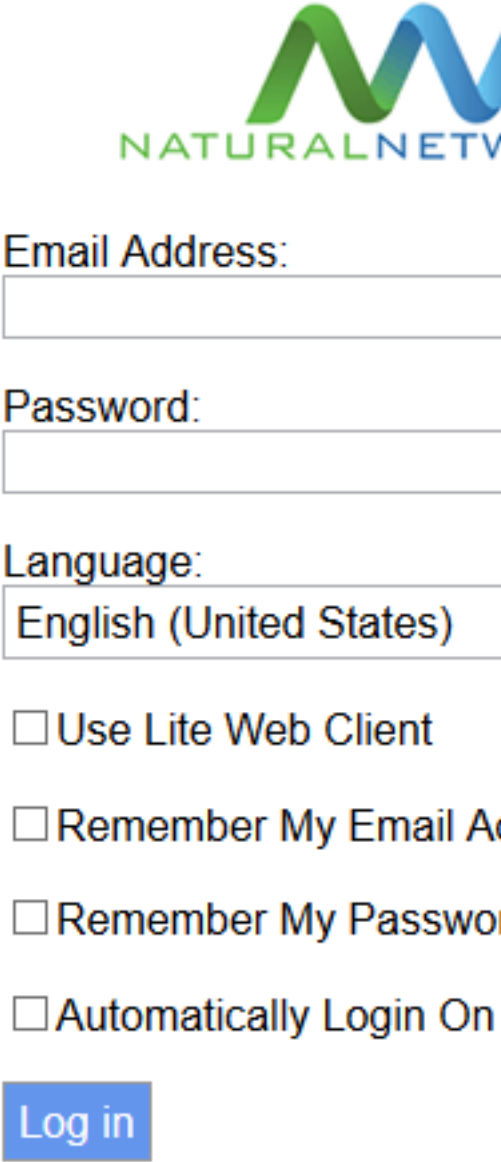
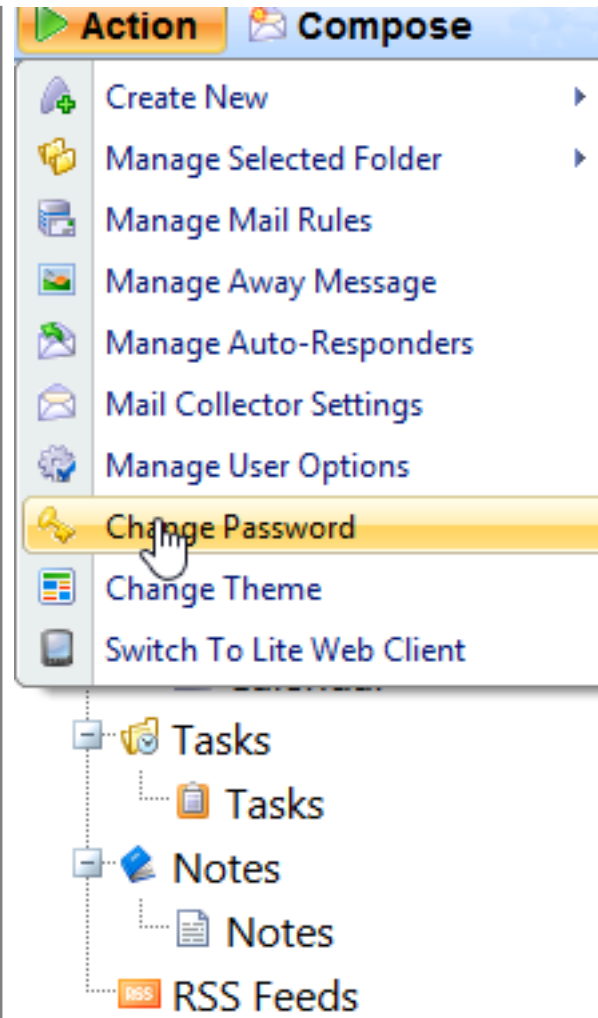


# Mail01 Password Reset

## Mail01 Password Reset

| Step # | Task  | Screenshot   |
|--------|---|--|
| 1      | Log into Webmail Portal at <a href="http://webmail.naturalnetworks.com">http://webmail.naturalnetworks.com</a> with your full email address and email account password. |  |
| 2      | Once logged in go to the action menu on   |  |

the left of the web application and select "Change password."



3

There you will put in your current password followed by our new one and confirm it. Read the disclaimer: "The password you choose must be at least eight characters in length and cannot exceed thirty characters. Additionally, it must contain at least one lowercase letter, one capital letter, one number, and one special character. Whitespace characters are not allowed."

**Change Password**

**Save**

The password you choose must be at least 8 characters in length and contain at least one uppercase letter, one lowercase letter, one number, and one special character. Special characters are not allowed.

Current Password:

New Password:

Retype New Password:

4 Click the **Save** button to have the system take the new password.

Online URL: <https://kb.naturalnetworks.com/article.php?id=425>